

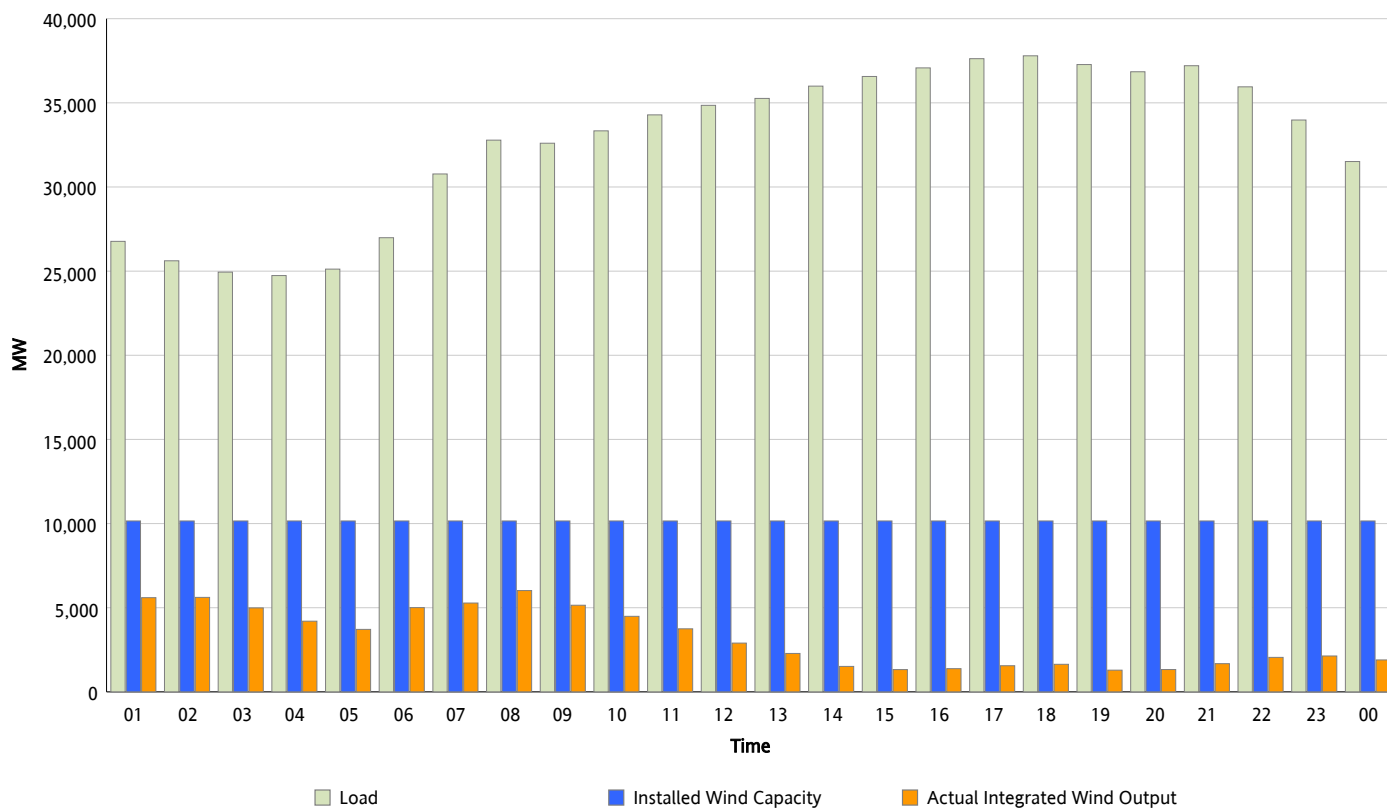


ERCOT Grid Operations

Wind Integration Report : 03/22/2013

Peak Load	37,796 MW
Load Peak Hour (HE)	18
Wind Over Peak	1,638 MW
Wind Record 02/09/13	9,481 MW
Max Wind Value*	6,263 MW
Wind Peak Time	07:37
Wind Integration %	19.09 %

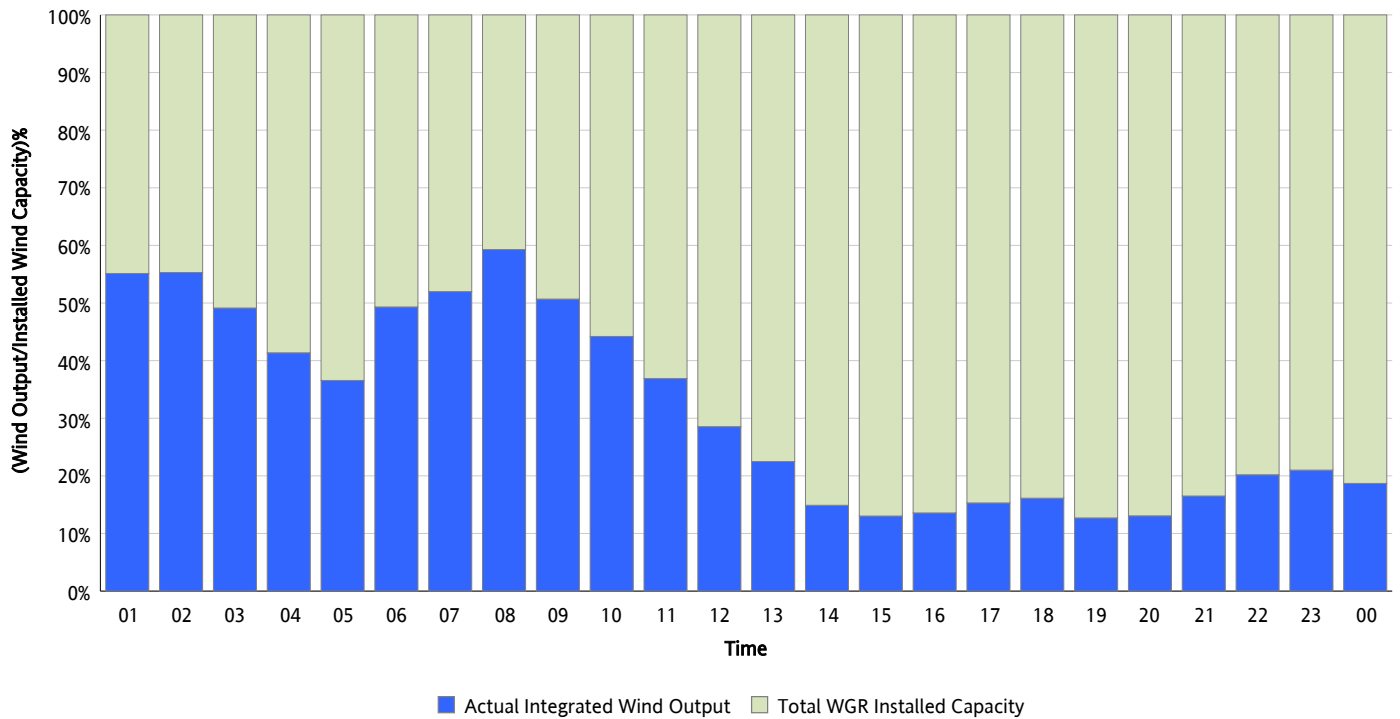
Hourly Average Actual Load vs. Actual Wind Output
03/22/2013



** Wind Record and Wind Max represent instantaneous values and the rest of the values are integrated over the hour*

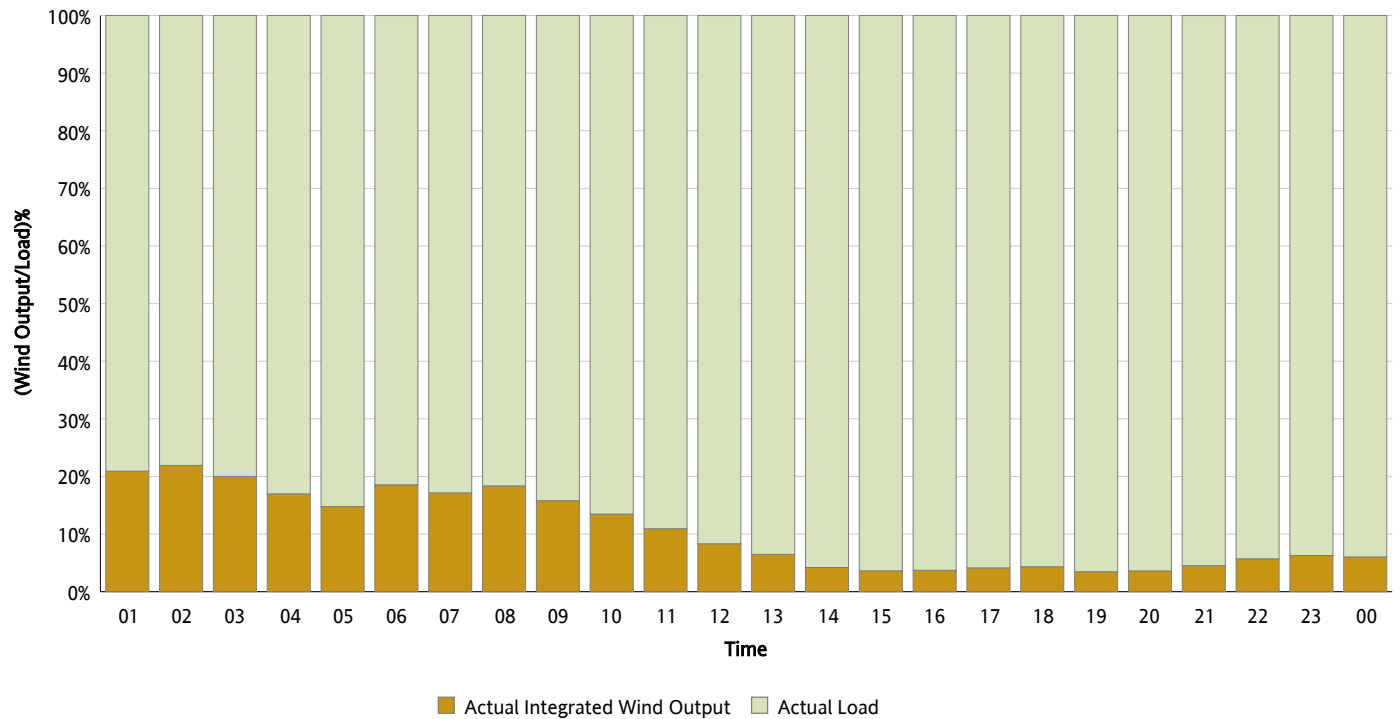
Actual Wind Output as a Percentage of the Total Installed Wind Capacity

03/22/2013



Actual Wind Output as a Percentage of the ERCOT Load

03/22/2013



ERCOT Load vs. Actual Wind Output

03/15/2013 - 03/22/2013

